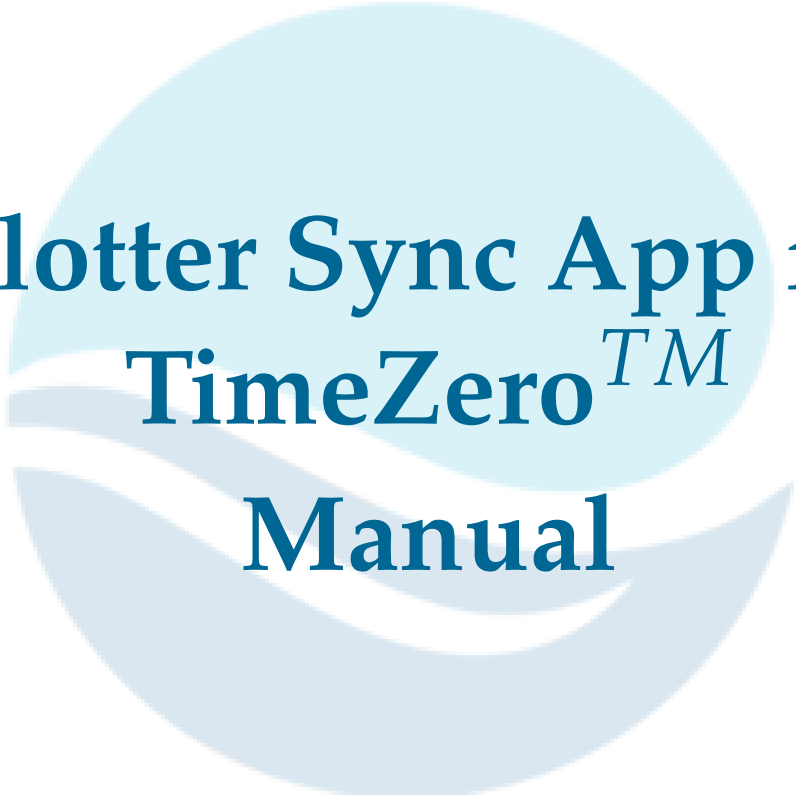


Rev 0.4 - March 2024



Plotter Sync App for TimeZeroTM Manual

**Blue Ocean Gear, Inc.
Proprietary**



TimeZero is a trademark of SigNet SAS.

Introduction

Blue Ocean Gear smart buoys enable you to track your gear and gather valuable sensor data. This manual explains how to see the location of your smart buoys on your TimeZeroTM plotter.

To purchase TimeZeroTM, contact a [TimeZero reseller](#).

System Requirements

Your computer must be running **TimeZeroTM Professional version 3 or later** - note that other versions of TimeZeroTM such as 'Navigator' do not allow buoy data to be imported.

In order to run TimeZeroTM Professional, your system should meet these requirements:

- Microsoft® Windows® 8.1 or Windows® 10/11 (64-bit operating system)
- CPU 2 GHz Intel® Core™ i5 4th generation or equivalent
- 4GB of RAM (8GB recommended)
- Video Board:
 - Minimum - Intel HD4400 Graphic Chipset (i5 4th generation with HD4400 or above)
 - Recommended - Dedicated Video Board with 1GB VRAM
- Screen Resolution: 1024 X 768 or higher (1280 x 800 or above highly recommended)
- Hard Disk: 40 GB of free space

Download

The Plotter Sync App installer can be downloaded from:

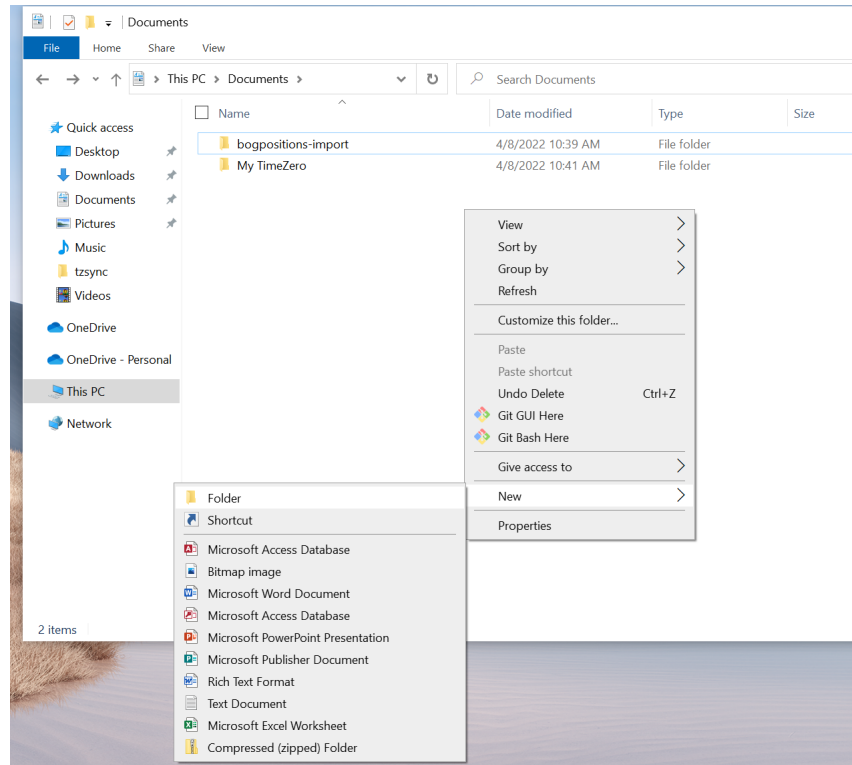
www.blueoceangear.com/resources > then go to installer download

Download this installer on the PC running TimeZeroTM. Note: this file is 50MB so if your PC is on satellite internet you may want to download over a lower-cost internet connection and transfer the file via USB stick.

Once installed, the app is designed to use minimal bandwidth, and should be usable over any satellite internet system. It will attempt to synchronize with the cloud once per minute. If your internet is available sporadically, the app will synchronize whenever it is available.

Create Data Sync Folder

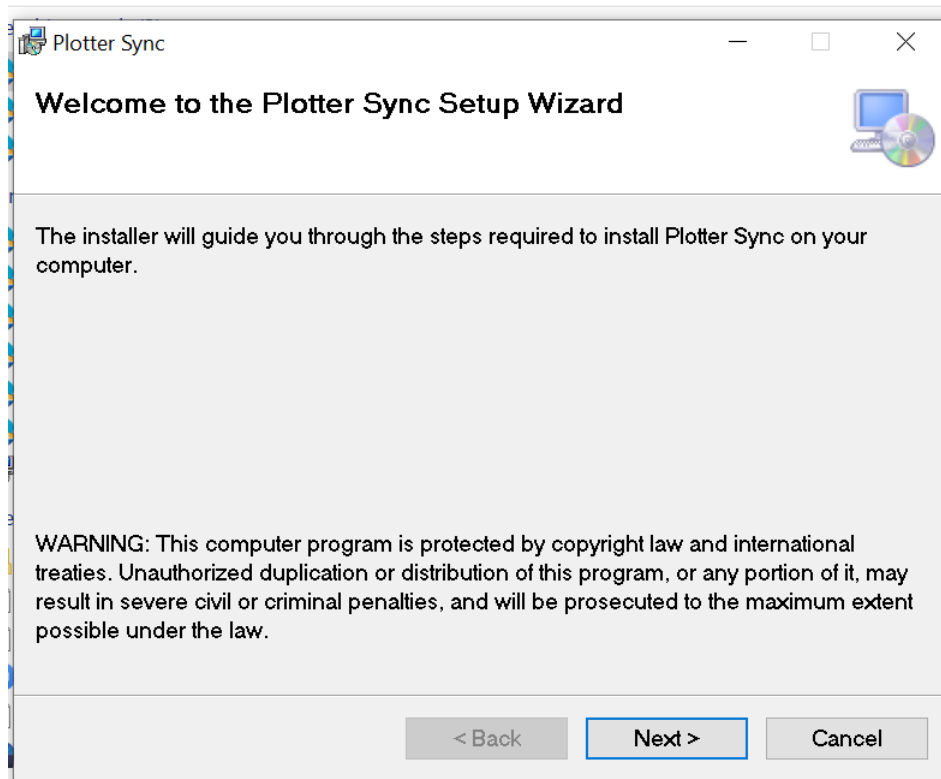
To synchronize the data between the Blue Ocean Gear cloud and TimeZeroTM, you must create an empty Windows folder on your PC. This can be anywhere; we recommend creating it in your Documents folder. We have called this folder **bogpositions-import** but you can call it anything; below we refer to this as the **Data Sync Folder**. This folder should not be used for any other purpose.



Install

Double-click the installer file on your TimeZeroTM PC to install the app. Click 'Next' to run through the installer process. The default options should not need to be changed. We recommend running as an administrator user, but this is not required.

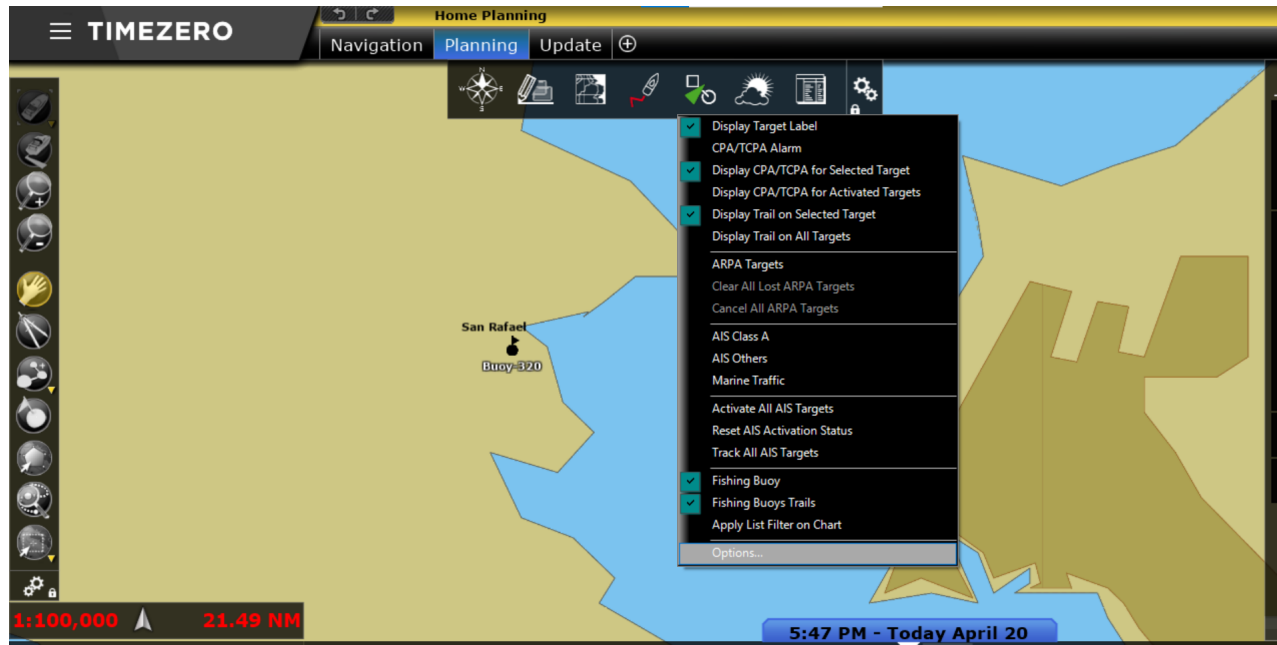
If this shows an error about Unknown or Untrusted Developers (depending on your version of Windows), click **More Info** and **Allow / Install**.



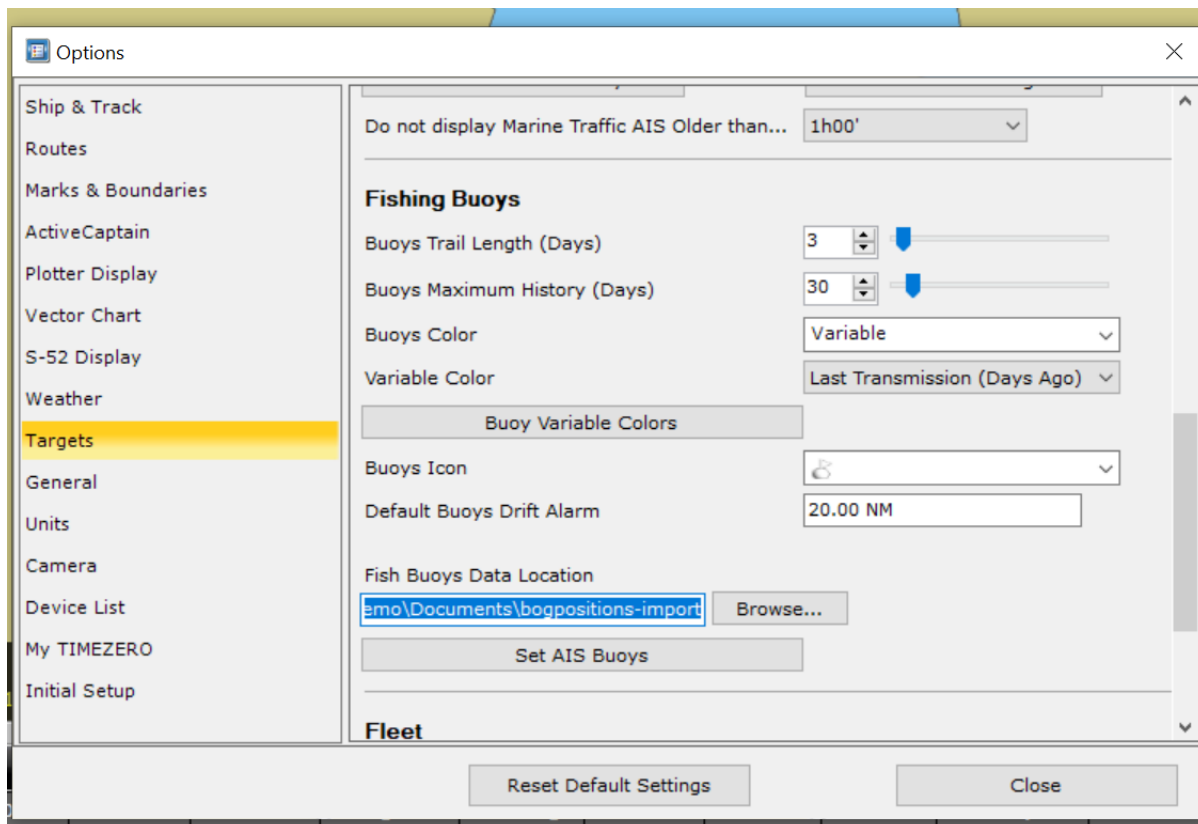
At the end of the installer, you should see the Blue Ocean Gear login screen. Leave this for now, we'll return to it later.

Configure TimeZero™

Open TimeZero™. In the top button bar, click **Targets** then **Options**.



In the options menu, scroll down to **Fish Buoys Data Location** and enter the **Data Sync Folder** you created earlier.



Configure Firewall / Internet Access

Many onboard internet configurations allow only specific websites and apps to access the internet. In this case, you or your network integrator must add these host names to the allowed list of sites:

- **blueapi.boggroup.net**
- **bluevue.boggroup.net**

Internet device configurations vary; for details on how to add these sites to your device, please consult your network integrator or the device manufacturer.

You can check if these sites were successfully added by visiting <https://bluevue.boggroup.net> in your browser. If you were able to access this website, then your firewall/internet settings are valid.

Open Plotter Sync App

If the Blue Ocean Gear login screen is still running after the installer finished, switch to it now.

Plotter Sync - Blue Ocean Gear

Blue Ocean Gear

Username

Password

TimeZero Folder ...

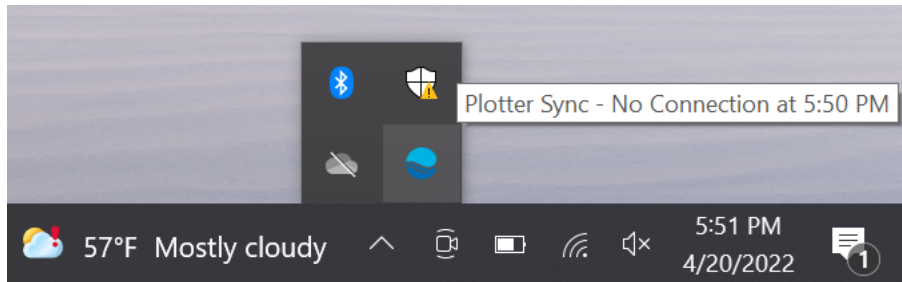
*This folder must be configured in Time Zero under
Targets/Options/Fish Buoys Data Location*

Save

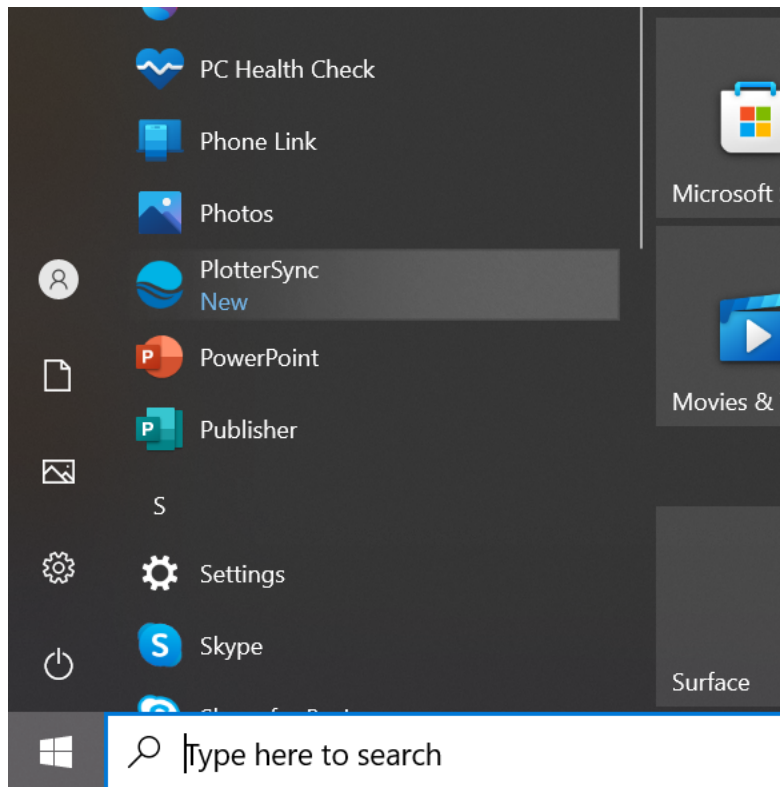
No Username set. at 5:53 PM

Version 2022.4.6.1350

If the login screen is not running, find the Blue Ocean Gear icon in the System Tray (the list of icons in the bottom-right of your screen - you may have to expand this list with the arrow), right-click and select **Open**.



If the Blue Ocean Gear icon is not in the system tray, you can start the **Plotter Sync** app from the Start Menu.



Log Into Your Blue Ocean Gear Account

When your Blue Ocean Gear account was created, you received an email with subject “Welcome to Blue Ocean Gear”. This email contains your username and a link to set your password.

- **Note** - you must set your password before logging into the Plotter Sync app.

From Blue Ocean Gear <support@blueoceangear.com> ☆

Subject **Welcome to Blue Ocean Gear**

To Me ☆



Hello and welcome to Blue Ocean Gear.

Your account has been created: your username is **tzdemo**

Now please [set your password](#). Then you can view your buoys' location on the [Blue Ocean customer site](#).

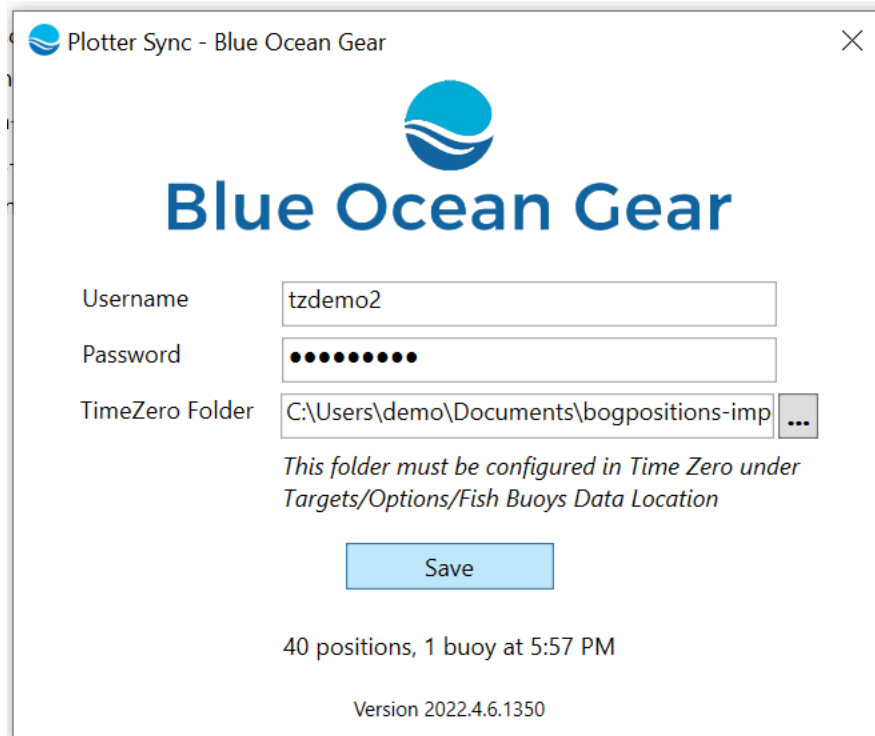
You can also download the [Buoy Locator iOS app](#) for your iPhone.



Please don't hesitate to contact us at support@blueoceangear.com with any questions or comments!

- From your friends at Blue Ocean Gear

Enter your username & password into the login form. Under **TimeZero Folder**, click the button and select the **Data Sync Folder** you created earlier. Click **Save**.

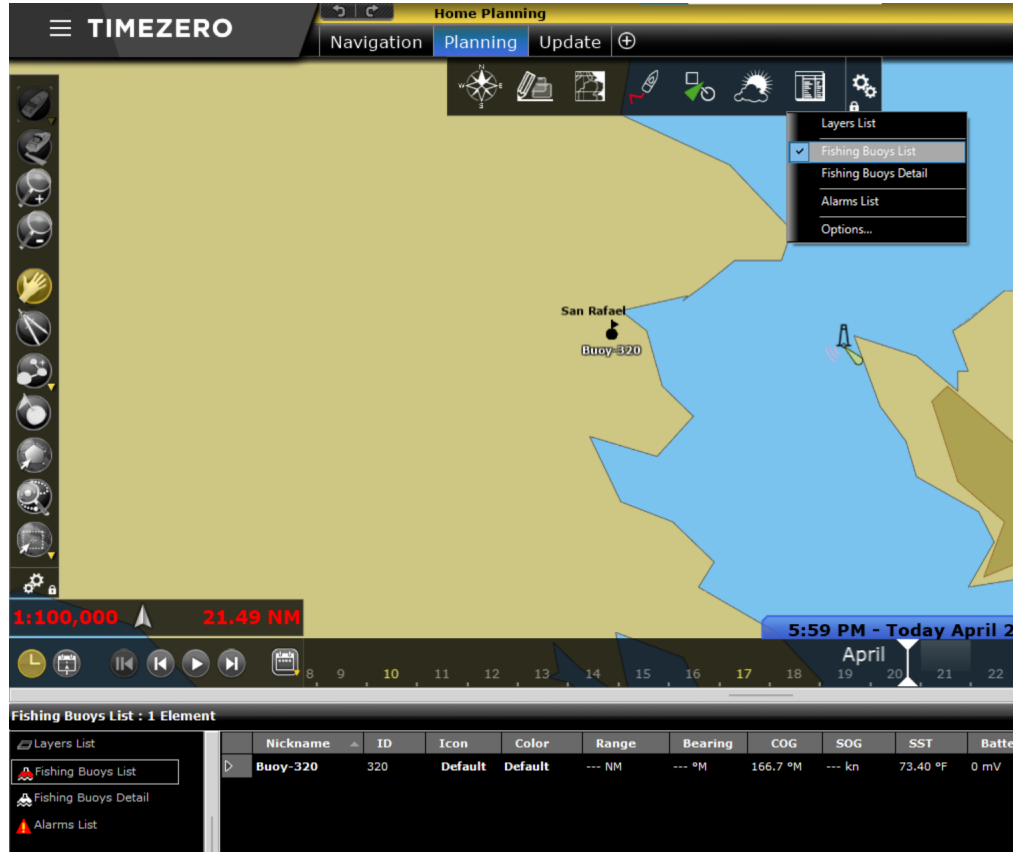


The screenshot shows a window titled "Plotter Sync - Blue Ocean Gear" with a close button in the top right corner. The window features the Blue Ocean Gear logo and the text "Blue Ocean Gear". Below the logo, there are three input fields: "Username" with the value "tzdemo2", "Password" with masked characters, and "TimeZero Folder" with the value "C:\Users\demo\Documents\bogpositions-imp" and a browse button "...". A note below the folder field reads: "This folder must be configured in Time Zero under Targets/Options/Fish Buoys Data Location". A blue "Save" button is centered below the note. At the bottom of the window, it displays "40 positions, 1 buoy at 5:57 PM" and "Version 2022.4.6.1350".

Your buoy data will start importing into TimeZeroTM automatically.

Viewing Your Buoys in TimeZero™

You should see the list of your buoys in the **Fishing Buoys List** panel at the bottom of your TimeZero™ screen. If this panel is not showing, click **Lists** from the top menu and select **Fishing Buoys List**.



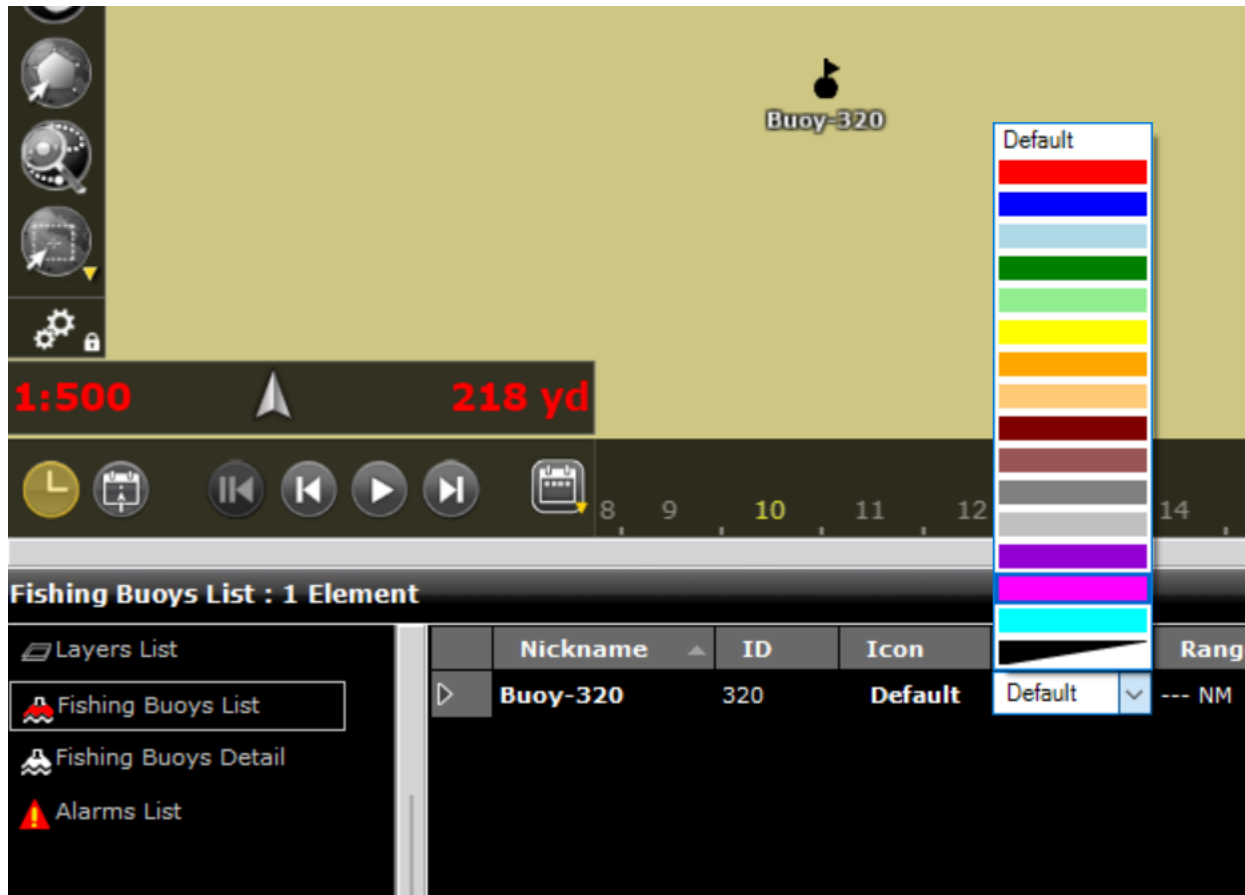
Double click the arrow on the left of a row in the **Fishing Buoys List** to select that buoy in the **Fishing Buoys Detail** panel. Here you can see the position history for the buoy. Double click an entry in this table to select it on the map.

The screenshot displays the TimeZero software interface. At the top, a map shows a buoy labeled "Buoy-320" with a position history trail. Below the map, a status bar shows "1:500" and "218 yd". A navigation bar includes a calendar for April, with the date "20" selected. Below the navigation bar, the "Fishing Buoys Detail : 320, 4 Elements" panel is visible. On the left, a "Layers List" shows "Fishing Buoys Detail" selected. The main panel displays a table with the following data:

Date	COG	SOG	SST	Battery	Position
6:17:42 PM Monday, March 21, 2022	0.0°	--- kn	73.4 °F	0 mV	N 37°58.044'; W 122°30.174'
6:18:36 PM Tuesday, March 22, 2022	180.0°	--- kn	80.6 °F	0 mV	N 37°58.038'; W 122°30.174'
6:18:37 PM Wednesday, March 23, 2022	16.1°	--- kn	75.2 °F	0 mV	N 37°58.038'; W 122°30.174'
5:45:10 PM Thursday, March 24, 2022	180.0°	--- kn	73.4 °F	0 mV	N 37°58.032'; W 122°30.174'

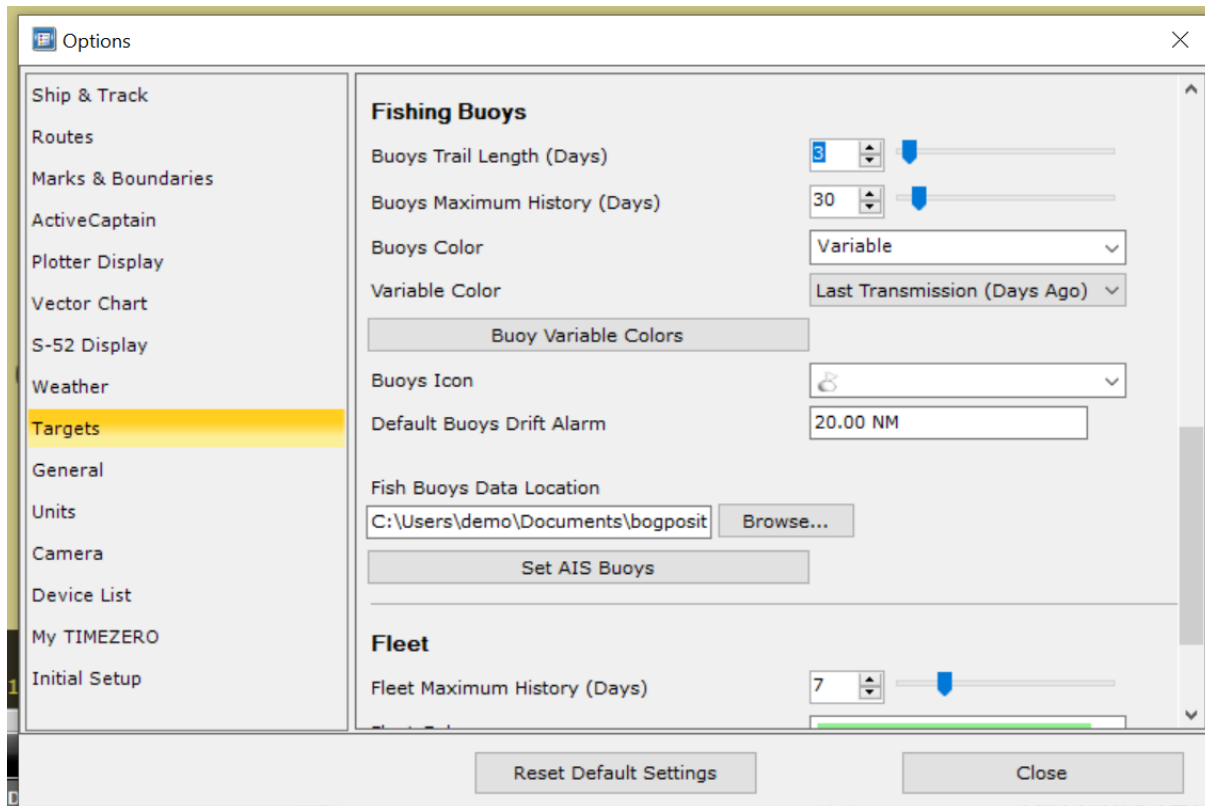
Set Buoy Name and Color

If you have many buoys in the water, it can be useful to distinguish them by giving them a name or a color. Find the buoy in the **Fishing Buoys List** table; click its entry under **Nickname** to set its name, and click the **Color** dropdown to pick a different color for that buoy's markers and lines.



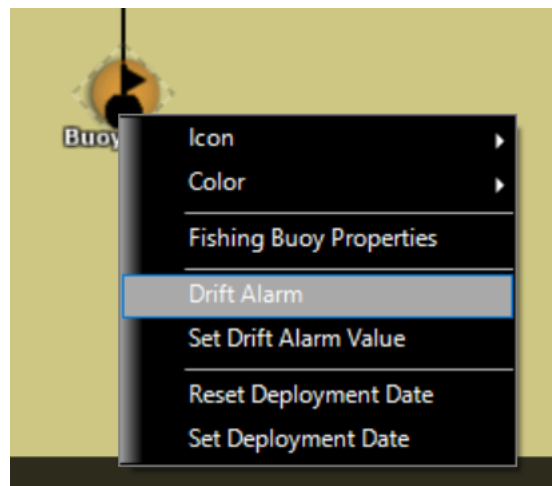
Set Data History

By default, TimeZero™ will show all data history for your buoys. This may result in overlapping lines on the screen. You can set data history on the map under **Targets** → **Options** → **Buoys Trail Length**. You can also use variable colors for your buoys based on temperature, speed, last transmission time, and buoy manufacturer. For the variable color to work, your buoy colors need to be 'default color' in list view. You can adjust the values for each colors by clicking 'Buoy Variable Colors'.



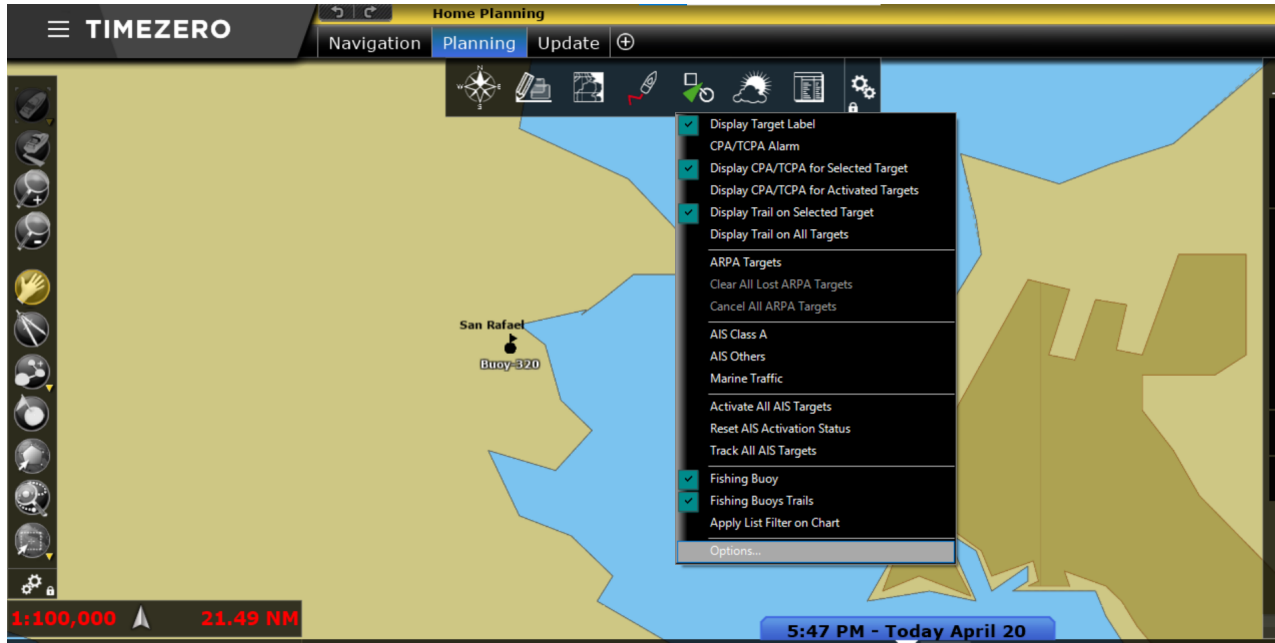
Drift Alarm

TimeZero™ can notify you when buoys drift beyond a certain range. To set the range, right click on a buoy and select **Set Drift Alarm Value**. To activate the alarm, select **Drift Alarm**.



Hiding your buoys and buoy trails

You can hide your buoys and buoy trails, or bring them back by going to Targets and selecting or deselecting Fishing Buoys or Fishing Buoy Trails.



Troubleshooting

If you can't see your buoys, first try the step above where it says to select Fishing Buoys under the Targets. If that doesn't work, try to increase the number of days you selected to show Buoy History (see one page up). If that doesn't work, contact us or your reseller.

Contacting Us

If you need any assistance configuring your buoys or the TimeZeroTM sync, please don't hesitate to contact us at support@blueoceangear.com.