



Blue Ocean Gear

The Farallon Newsletter

LONGLINING WITH SMART BUOYS



Longlining off the coast of Alaska with a Smart Buoy

Longliners around the world work hard to maximize their useful time on the water, reducing gear loss and optimizing fuel consumption. 'Longlining' in general refers to gear that can be mile-long strings of stationary pots or 40 miles of drifting gear moving at speeds of 4 knots or more. Vessels can range from small, owner-operated boats to 'freezer longliner' ships up to 190ft in length. The loss of expensive gear is common due to interactions with other vessels and/or rugged ocean conditions.

As we know, fishers can have a difficult time finding gear when conditions make it challenging. "Where's my gear?" is a question that Blue Ocean Gear helps to answer, but it can also be: "Can I see my gear no matter where I am?", "Am I able to find my gear whenever I want", or "Can I use my existing onboard systems to see where my gear is?" Therefore, any solution needs to be robust, dependable, and compatible with most equipment including plotters. It needs to allow fishers to fish smarter and increase their catch by reducing gear loss, providing ocean condition data, and reducing operational cost by finding gear faster.

Blue Ocean Gear has been working with longliners to help:

- track gear remotely both near and offshore using Satellite communication
- reduce time searching for gear in adverse weather conditions, using the Fast Update Mode
- replace AIS beacons in markets where the use of AIS is illegal on fishing buoys
- provide a more durable, depth-rated alternative to AIS beacons in markets where AIS is still allowed but fails to hold up

I started the season with 11 AIS beacons and 6 Smart Buoys. Only 5 of the 11 AIS beacons are working, but all 6 Smart Buoys are working as expected" - from an Alaskan black cod fisher where strong ocean currents drag his surface buoys into deep waters that AIS beacons can't survive.

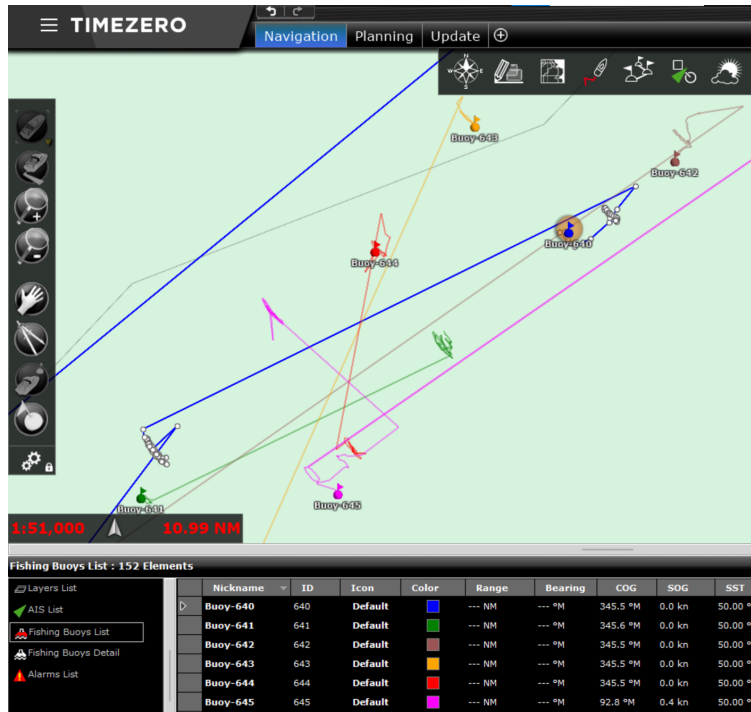
Fishermen have deployed Smart Buoys in a wide range of fisheries and gear types, such as:

- Pelagic longlines in the Canadian and New England North Atlantic fleets
- Demersal (bottom) longlines for black cod (sablefish) and halibut in Alaska, British Columbia and California using hooks, traditional pots or slinky-pots
- Offshore bottom longlining in the Atlantic red crab fishery
- The experimental deep-set longline fishery in Southern California

The feedback we've received positively points towards an increasing need among longliners for a dependable and robust solution. We're continuously adapting our product platform to specific use cases and we would be interested to hear about your

specific needs. If you'd like to find out how Smart Buoys can help with your operations, please contact [Blue Ocean Gear](#).

PRODUCT TIP: PLOTTER SYNC APP



If you're using a TimeZero plotter, we have an integration app that shows your buoy location and ocean data in real-time (as often as the buoy's transmission rate). Access to the internet is required for this to work. Contact Blue Ocean Gear to get the app and for the support to install it, which should take less than 30 minutes.

The app consolidates buoy data on the plotter and makes it easy to locate gear in the water. Buoy data such as buoy ID, last known buoy geolocation, buoy speed, buoy position history, and temperature data are now easily readable on the plotter.

To learn more about the company, click [here](#)

This newsletter does not reveal personal identity or share gear location information without prior permission. If you don't want to receive this newsletter click [unsubscribe](#). 980 S Amphlett Blvd, San Mateo, CA 94402